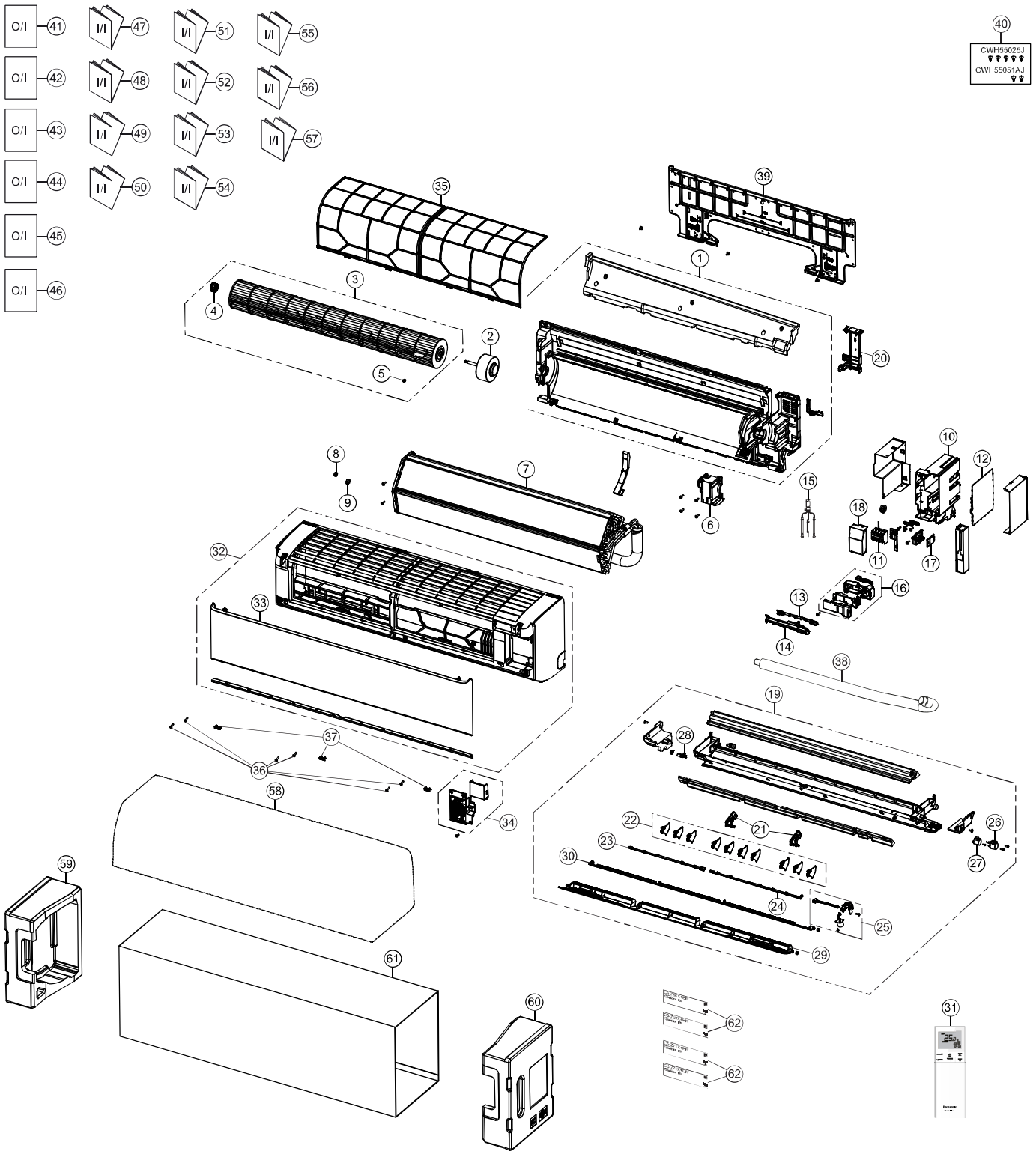


# 16. Exploded View and Replacement Parts List

## 16.1 Indoor Unit



**Note**  
 The above exploded view is for the purpose of parts disassembly and replacement.  
 The non-numbered parts are not kept as standard service parts.

SAFETY	REF. NO.	PART NAME & DESCRIPTION	QTY.	CS-Z50XKEW	CS-Z71XKEW	REMARK
	1	CHASSIS COMPLETE	1	ACXD50C04180	←	
⚠	2	FAN MOTOR	1	L6CBYYL0376	L6CBYYL0377	○
	3	CROSS-FLOW FAN COMPLETE	1	ACXH02C01340	←	
	4	BEARING ASSY	1	CWH64K1006	←	
	5	SCREW - CROSS-FLOW FAN	1	CWH551146	←	
	6	FAN MOTOR BRACKET	1	ACXD54-04360	←	
	7	EVAPORATOR	1	ACXB30C33300	ACXB30C33310	
	8	FLARE NUT (LIQUID)	1	CWT251048	←	
	9	FLARE NUT (GAS)	1	CWT251032	CWT251033	
	10	CONTROL BOARD CASING	1	ACXH10-08620	←	
⚠	11	TERMINAL BOARD COMPLETE	1	ACXA28C05970	←	○
⚠	12	ELECTRONIC CONTROLLER - MAIN	1	ACXA73C72510	ACXA73C72520	○
⚠	13	ELECTRONIC CONTROLLER-INDICATOR	1	ACXA73-37110	←	○
	14	INDICATOR HOLDER	1	ACXD93-22840	←	
⚠	15	SENSOR COMPLETE	1	ACXA50C17750	CWA50C2664	○
⚠	16	GENERATOR COMPLETE	1	ACXH94C01420	←	○
⚠	17	ELECTRONIC CONTROLLER-WIFI	1	ACXA73-28520	←	○
	18	CONTROL BOARD TOP COVER	1	ACXH13-08680	←	
	19	DISCHARGE GRILLE COMPLETE	1	ACXE20C06380	←	
	20	BACK COVER CHASSIS	1	ACXD93-22420	←	
	21	FULCRUM	2	ACXH62-00810	←	
	22	VERTICAL VANE	10	ACXE24-04000	←	
	23	CONNECTING BAR - LEFT	1	ACXE26-02640	←	
	24	CONNECTING BAR - RIGHT	1	ACXE26-02650	←	
⚠	25	AIR SWING MOTOR ASSY	1	ACXA98K00220	←	○
⚠	26	AIR SWING MOTOR	1	ACXA98-02980	←	○
⚠	27	AIR SWING MOTOR	1	ACXA98-02950	←	○
	28	CAP - DRAIN TRAY	1	CWH521259	←	
	29	HORIZONTAL VANE COMPLETE - OUTER	1	ACXE24C04910	←	
	30	HORIZONTAL VANE COMPLETE - INNER	1	ACXE24C04760	←	
⚠	31	REMOTE CONTROL COMPLETE	1	ACXA75C20670	←	○
	32	FRONT GRILLE COMPLETE	1	ACXE10C13570	ACXE10C13580	
	33	INTAKE GRILLE COMPLETE	1	ACXE22C04450	←	
	34	GRILLE DOOR COMPLETE	1	ACXE14C01440	←	
	35	AIR FILTER	2	ACXD00-03050	←	
	36	SCREW - FRONT GRILLE	6	XTT4+16CFJ	←	
	37	CAP - FRONT GRILLE	3	ACXH52-04000	←	
	38	DRAIN HOSE	1	ACXH85-00210	←	
	39	INSTALLATION PLATE	1	ACXH36-00880	←	
	40	BAG COMPLETE - INSTALLATION SCREW	1	CWH82C1705	←	
	41	OPERATING INSTRUCTION	1	ACXF55-30281	←	
	42	OPERATING INSTRUCTION	1	ACXF55-30291	←	
	43	OPERATING INSTRUCTION	1	ACXF55-30301	←	
	44	OPERATING INSTRUCTION	1	ACXF55-29741	←	
	45	OPERATING INSTRUCTION	1	ACXF55-29751	←	
	46	OPERATING INSTRUCTION	1	ACXF55-29761	←	
	47	INSTALLATION INSTRUCTION	1	ACXF60-42501	←	

SAFETY	REF. NO.	PART NAME & DESCRIPTION	QTY.	CS-Z50XKEW	CS-Z71XKEW	REMARK
	48	INSTALLATION INSTRUCTION	1	ACXF60-42511	←	
	49	INSTALLATION INSTRUCTION	1	ACXF60-42521	←	
	50	INSTALLATION INSTRUCTION	1	ACXF60-42531	←	
	51	INSTALLATION INSTRUCTION	1	ACXF60-42541	←	
	52	INSTALLATION INSTRUCTION	1	ACXF60-42551	←	
	53	INSTALLATION INSTRUCTION	1	ACXF60-42561	←	
	54	INSTALLATION INSTRUCTION	1	ACXF60-42571	←	
	55	INSTALLATION INSTRUCTION	1	ACXF60-42581	←	
	56	INSTALLATION INSTRUCTION	1	ACXF60-42591	←	
	57	INSTALLATION INSTRUCTION	1	ACXF60-42601	←	
	58	BAG	1	ACXG86-00130	←	
	59	SHOCK ABSORBER - LEFT	1	ACXG70-13280	←	
	60	SHOCK ABSORBER - RIGHT	1	ACXG70-13290	←	
	61	C.C.CASE	1	ACXG50-57180	←	
	62	MODEL LABEL	2	ACXF85-64150	ACXF85-64160	

(NOTE)

- All parts are supplied from PAPAMY, Malaysia (Vendor Code: 00029488).
- “O” marked parts are recommended to be kept in stock.